

0 5m 12m 25m 50m

SCALE

METRES

SUGGESTED PLANT SPECIES LIST

Botanic Name	Common Name	Mature Height	Planting Size/density
Canopy Trees			
Banksia integrifolia	Coastal Banksia	6.0m	100Litre*
Banksia serrata	Old Man Banksia	5.0m	100Litre*
Cupaniopsis anacardioides	Tuckeroo	8.0m	200Litre*
Ficus rubiginosa	Port Jackson Fig	20.0m	400Litre*
Native Shrub Grasses and Groundcovers			
Carex appressa	Tall Sedge	0.8m	Tube, 5/m2
Dianella caerulea	Blue Flax-Lily	0.5m	Tube, 5/m2
Dichelachne crinita	Longhair Plumegrass	1.0m	Tube, 5/m2
Ficinia nodosa	Knobby Club Rush	0.8m	Tube, 5/m2
Hardenbergia violacea	Purple Coral Pea	Ground Cover	Tube, 3/m2
Hibbertia scandens	Guinea Flower	Ground Cover	Tube, 3/m2
Lomandra longifolia	Spiny-Headed Mat-Rush	1.2m Tube	Tube, 3/m2
Themeda australis	Kangaroo Grass	0.5m Tube	Tube, 5/m2

*tree sizes subject to availability at time of procurement

NOTES:

Maintenance will be carried out in accordance with recommendations of Carss Park Plan of Management. All landscape areas to be installed and maintained in perpetuity by Georges River Council.

All Canopy trees selected for use will be endemic to this location and or historically /culturally significant.

Kogarah War Memorial Pool Remediation

September 2020

LEGEND

- | | |
|-----------------------------------|---|
| A. Existing Boardwalk | B. Proposed Path and Pavement Area (minimum 2.0m wide, Exposed Aggregate) |
| C. Existing Carparking Area | E. Future Memorial Wall (Engineers Detail) |
| D. Existing Path | G. Existing Bench Seating |
| F. Proposed Bench Seating | J. Proposed Shelter / Picnic Tables |
| H. Existing Salt Marsh Planting | L. Proposed Irrigation Tank |
| K. Proposed Picnic Platform | M. Grassed Passive Open Space Area (Approx. 9.60m Diameter, Engineers Detail) |
| N. Proposed Native Shrub Planting | P. Views to Carss Cottage |
| To supplement existing embankment | R. Sandstone Block Border to Grass |
| S. Views to Sports Fields | T. Views to Kogarah Bay |

1. Proposed Tree, Old Man Banksia (Mature Height Approx. 5.0m)
 2. Proposed Tree, Coastal Banksia (Mature Height Approx. 6.0m)
 3. Proposed Tree, Port Jackson Fig (Mature Height Approx. 20.0m)
 4. Proposed Tree, Tuckeroo (Mature Height Approx. 8.0m)
- EX. Existing Tree (Refer Arborist Report. Moore Trees)



Michael Siu
Landscape Architects
PO Box 550 Hurstville NSW 1481
michael@msla.com.au
02 9557 9833 | 0417 280 249

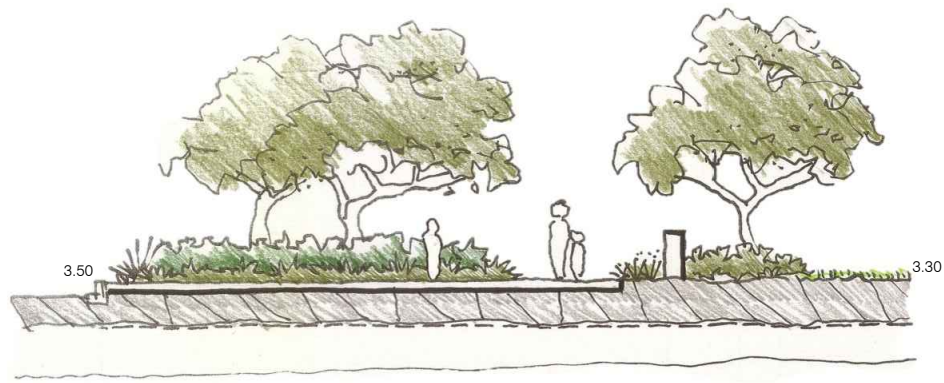
Landscape Concept 1/2

Kogarah War Memorial Pool Remediation
78 Carwar Avenue Carss Park

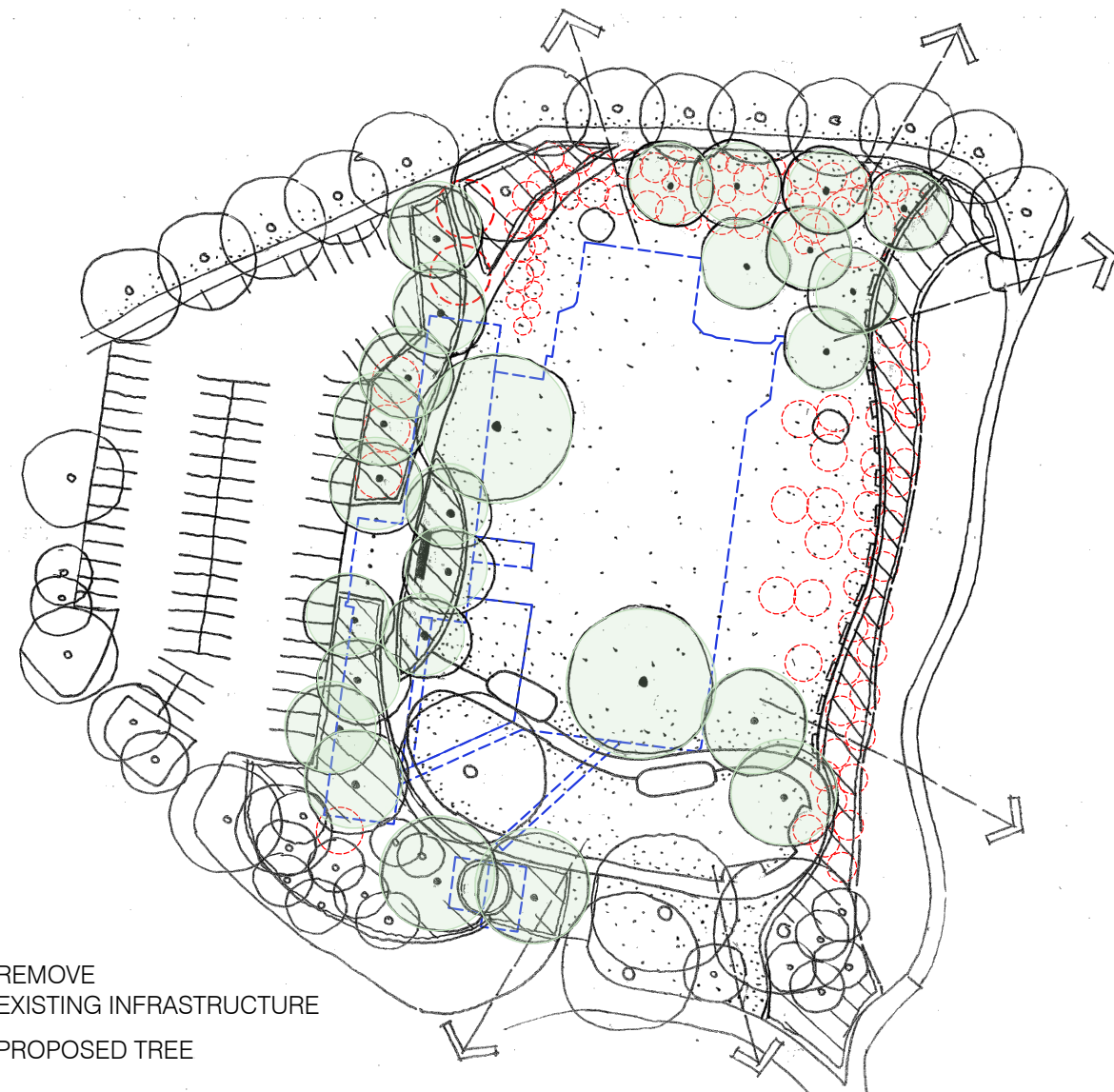
Scale As Shown Dwg: L01/2- K25112 27 Aug 2020

ABN 15 086 982 158 Copyright 2020 M.SIU

CAR PARK | PARK ENTRY | MEMORIAL WALL / PASSIVE RECREATION AREA

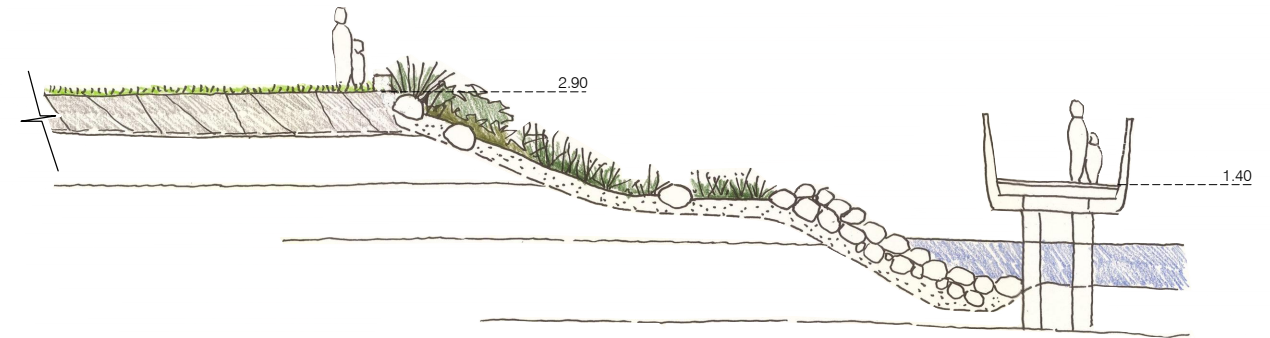


A CARPARK ENTRY/ MEMORIAL WALL - WEST NTS

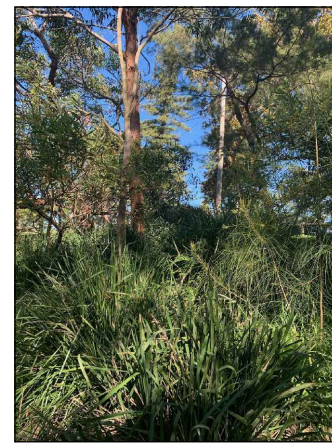


C PROPOSED AND EXISTING TREES NTS

PASSIVE RECREATION AREA | EXISTING AND NEW RIPARIAN VEGETATION EMBANKMENT | EXISTING SALTMARSH | SANDSTONE FORESHORE | BOARDWALK



B WATERS EDGE/ BOARDWALK - EAST NTS



LANDSCAPE ELEMENTS AND PLANTING
(Details as per Carss Bush Park Landscape Masterplan)